

Requirements:

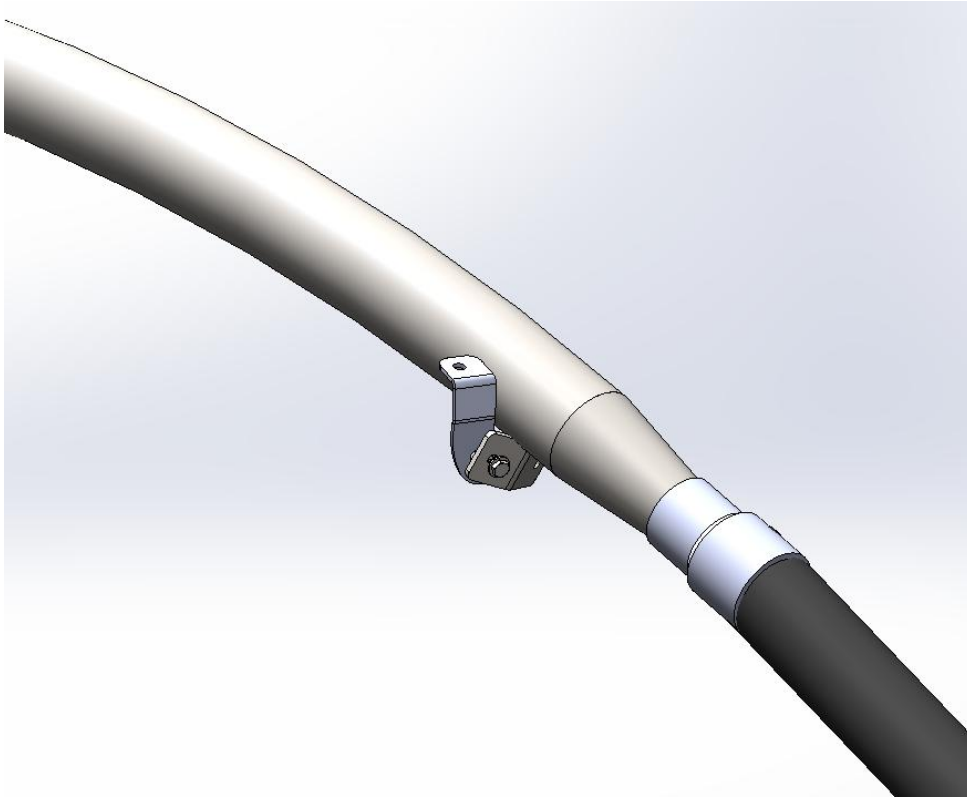
- Vacuum Stanchion
- P-CPY-508-R-S-K Curved Spreader Bar Retrofit Kit
 - P-CPY-508 Canopy for Curved Spreader Bar
 - P-VAC-508 Curved Spreader Bar
 - P-S-0427, P-S-0428 Curved Spreader Bar Mounting Brackets
 - 4X ¼-20 x ¾" Bolt, nut, and washer, and lock washer

Parts:

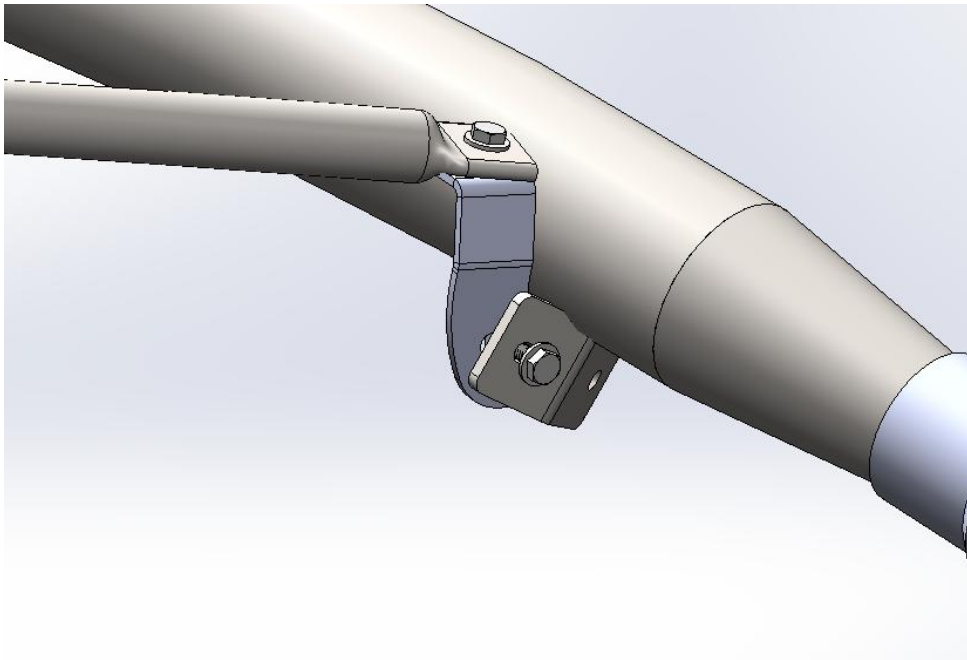


Set Up Instructions:

- If applicable, remove existing canopy and spreader bar.
- If applicable, loosen (do not remove) the u-bolts on the canopy arches to allow the arches to pivot outward.
- Attach the P-S-0427 & P-S-0428 brackets to the upper face of the existing tabs on the arches through the slotted holes on the brackets. Do not fully tighten the hardware.



- Adjusting the arches as necessary, attach P-VAC-508 to the brackets



- Adjust the brackets to be as close to flush with the arches as possible, then tighten all hardware.
- Install P-CPY-508 by first clipping the clips to the outboard existing tab on the arch. Next, attach the rear section of the canopy via the split collars and adjust until slack is removed before tightening the split collars. Next, wrap the canopy around the spreader bar and zip closed. Finally, adjust turnbuckles until canopy is fully taut.

Variations

- Narrow Curved Spreader Bar – P-CPY-508-[R]-116-S
 - This is for legacy sites that require a 116” wide spreader bar. All instructions will be the same.
- Legacy Arch Retrofit
 - This is for older styles of vacuum arches that have both left and right-handed brackets to attach the spreader bar rather than a single ambidextrous bent bracket. This includes a shorter adapter bracket that is not handed. Included QTY 2 P-S-0690 replaces both P-S-0427 AND P-S-0428. Canopy will reuse existing collars for connection as shown below:

