



Tommy Car Wash Systems | 648 South Point Ridge | Holland, MI 49423 | tommycarwash.com

Ozone Replacement Aerator Installation Instructions

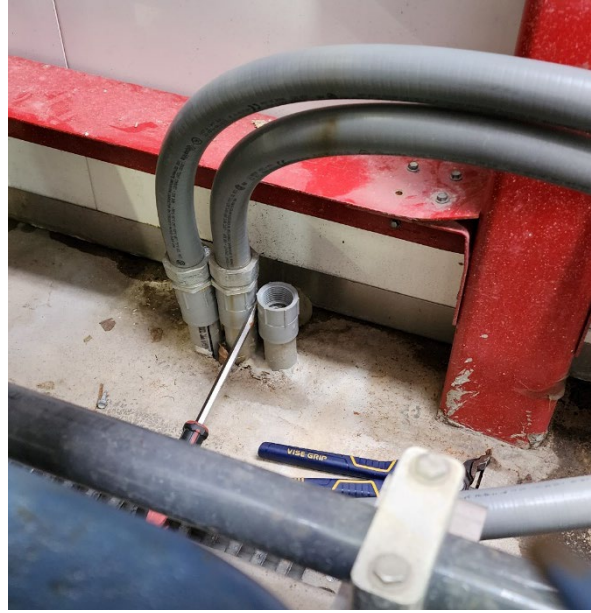
Step 1: Locate the float valve wiring from tank 3 and disconnect.



Step 2: Remove cover from tank 3 and pull wiring through chase way to remove the float valve.



Step 3: Remove any extra conduit from chase way, leaving only the NPT adapter on the buried PVC line.



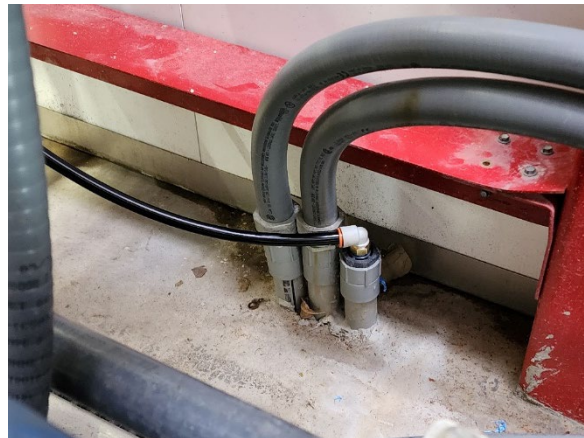
Step 4: Tape and thread on the provided 1" MNPT x 1/4" FNPT bushing (P-WAT-2235) to the underground chase way.



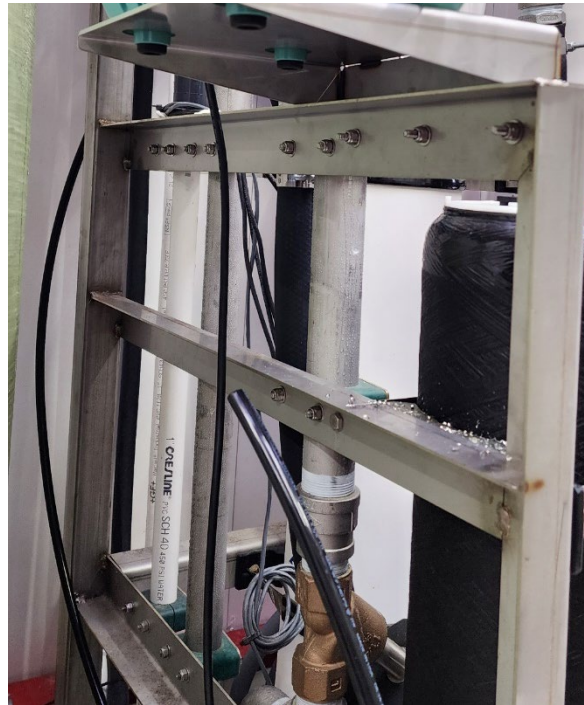
Step 5: Tape and thread on the provided $\frac{1}{4}$ " MNPT x $\frac{1}{2}$ " Push-to-Connect swivel elbow (P-WAT-2323) to the previously installed bushing.



Step 6: Connect one end of the provided $\frac{1}{2}$ " black poly-line (P-WAT-2461) to the disconnect and route the line around the back side of the RO unit, ending at the framing above the black sediment filter.



Step 7: Using the provided aerator mount (P-S-0159), mark and drill the 3x 3/8" holes on the RO frame and use provided hardware to fasten mount to frame.



Step 8: Assemble the provided fittings (will be PVC, not brass as shown in below picture – „P-AIR-2039) to connect the rubber hose elbow to the poly-line. Use included ring or hose clamps to secure rubber elbow to aerator and to adapter fittings. Using a small section of poly-line, connect the check valve in-line, making sure that the flow direction is going away from the aerator.



Step 9: Place aerator on previously installed mount plate. Connect poly-line to fittings. Secure poly-line to RO frame using zip-ties. Make sure to locate poly-line where minimal chance of rubbing and wear will occur. Use sleeve if needed.



Step 10: Tape and thread barbed elbow into PVC socket/FNPT adapter

Step 11: Prime and glue PVC socket to existing chase way with elbow pointing *down*

Step 12: Attach ½" polybraided clear hose to barb, securing with ring clamp. Attach other end to aerator head hose barb with another ring clamp.

Step 13: Zip-tie aerator head to top of stainless steel stand with at least 2 zip ties.

Step 14: Carefully lower the aerator/stand into the tank using the hose. The aerator arms should bend up out of the way so it fits through the tank opening on the way down.

Step 15: Go back to the aerator unit and plug the power cord into the nearest outlet. The aerator should make a low humming noise and be vibrating slightly. Go back to the tank and see that the water is bubbling and moving.



If you have any questions, please reach out to either Client Services or Equipment Support

Client Services – 616-795-4893

clientservices@tommycarwash.com

Equipment Support – 616-795-4893

support@tommycarwash.com